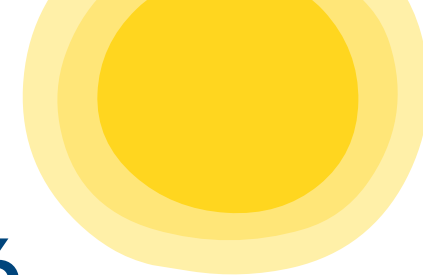




# Communities for Children Community Strategic Plan 2022-2026



## Vision

A strong, welcoming and inclusive community that works together to support happy and healthy children and families where they can be valued and safe.



## Where

- Beaconsfield–Beauty Point
- George Town
- Newnham–Lilydale
- Mowbray–Invermay
- Ravenswood
- Waverley–St Leonards



## What

The children of kanamaluka have a childhood of:

- Being Connected to Culture and Identity
- Being Loved and Safe
- Learning and Participating
- Being Healthy



## How

- Community led
- Children's Voice
- Listening to all the voices – nothing about us, without us!
- Strength in diversity
- Effective partnerships between services
- Effective partnerships between services and community

*kanamaluka - In palawa kani, the language of Tasmanian Aborigines*

